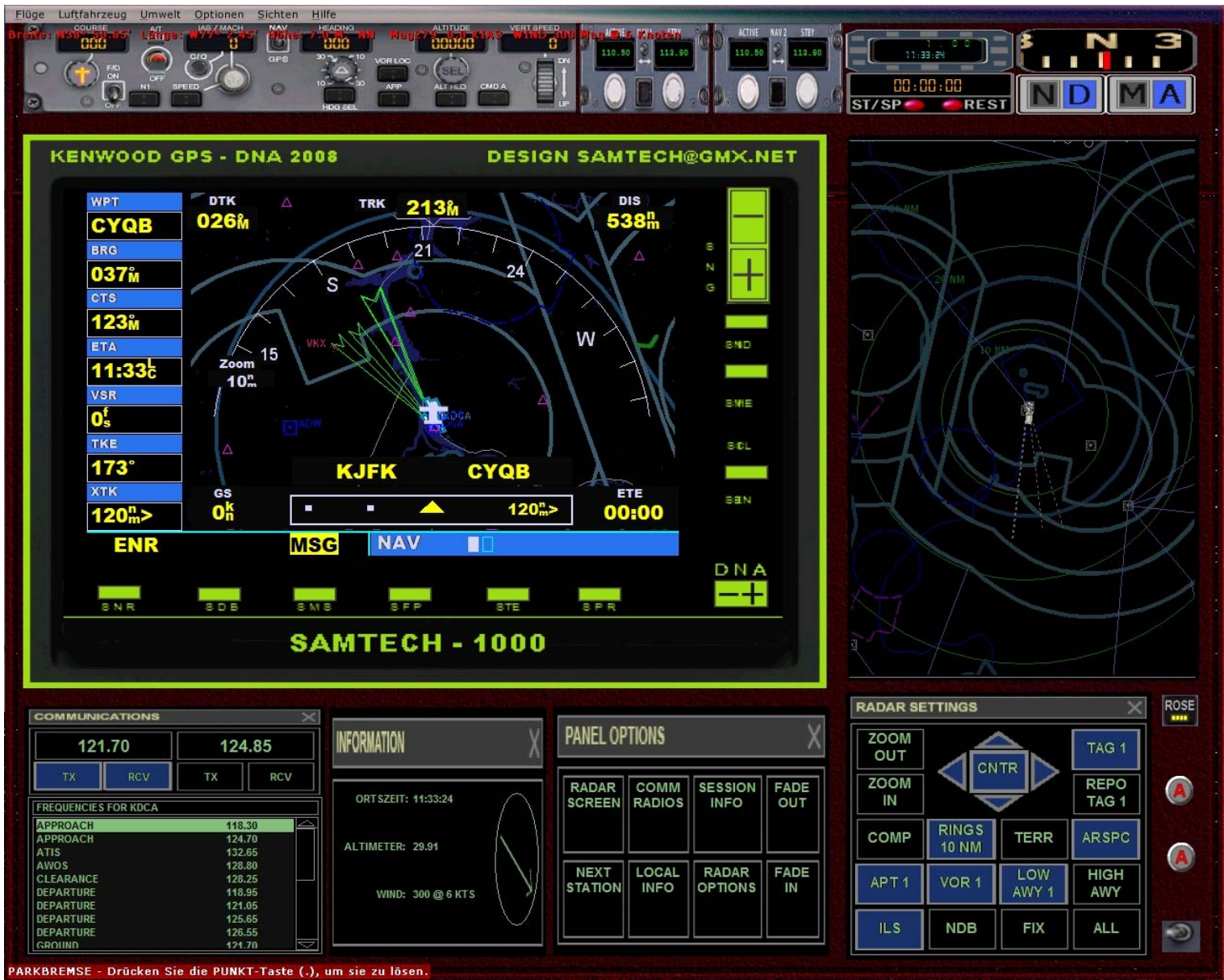


**2007 – 2008 Datenverarbeitung und Informationstechnik Boing – Microsoft – Sam Kooperation GPS 2008**



PARKBREMSE - Drücken Sie die PUNKT-Taste (.), um sie zu lösen.

**// This Panel.cfg file created by FS Panel Studio panel editor utility - <http://www.fspanelstudio.com>  
// Built Tuesday, March 25, 2008 at 08:42 FSPS Build:20211**

**[Window Titles]**

**Window00=Main Panel**

**Fixed Window30=FORWARD\_UP**

**[VIEWS]**

**VIEW\_FORWARD\_WINDOWS=0,RADIO\_STACK\_PANEL,GPS\_PANEL,THROTTLE\_PANEL,COMPASS\_PANEL,OVERHEAD\_PANEL**

**VIEW\_FORWARD\_ZOOM=0.500**

**VIEW\_FORWARD\_UP\_WINDOWS=30**

**//-----**

**[Window00]**

**file=gg777panelv2.bmp**

**size\_mm=1024,768**

**window\_size\_ratio=1.000**

**position=7**

**visible=1**

**ident=0**

**window\_size= 1.000, 1.333**

**window\_pos= 0.000, 0.000**

**gauge00=radar!radar\_settings, 316,599,95,56**

**gauge01=radar!radarscreen, 316,468,95,128**

**gauge02=G1000!audio\_panel, 50,586,36,67**

gauge03=Magnetic\_Compass!Magnetic-Compass, 494,182,39,37  
gauge04=737-400!Throttle Quadrant, 477,664,99,75  
gauge05=jet!park\_brake, 581,742,43,18  
gauge06=jet!autobrakes1, 581,665,45,47  
gauge07=jet!brake, 581,715,43,22  
gauge08=jet!electric\_avionic, 281,134,10,10  
gauge09=jet!compass, 494,224,38,28  
gauge10=jet!electric\_avionic, 308,144,10,10  
gauge11=jet!electric\_battery, 154,197,20,10  
gauge12=jet!electric\_battery, 178,197,20,10  
gauge13=jet!electric\_gen\_e1, 207,197,20,10  
gauge14=jet!electric\_gen\_e1, 231, 197 ,20,10  
gauge15=jet!electric\_gen\_e2, 259,197,20,10  
gauge16=jet!electric\_gen\_e2, 284,197,20,10  
gauge17=jet!electric1\_battery, 322,149,10,10  
gauge18=jet!electric1\_gen\_e1, 294,138,10,10  
gauge19=jet!electric1\_gen\_e1, 273,159,10,10  
gauge20=jet!electric1\_gen\_e2, 300,170,10,10  
gauge21=jet!electric1\_gen\_e1, 286,165,10,10  
gauge22=jet!electric1\_gen\_e2, 314,176,10,10  
gauge23=jet!hsi\_jet, 102,535,92,71  
gauge24=jet!hsi1\_rose1\_switch, 306,395,15,15  
gauge25=jet!jet\_airspeed, 883,592,45,62  
gauge26=jet!jet\_altimeter, 827,537,100,52  
gauge27=jet!jet\_aoa, 719,499,33,35  
gauge28=jet!jet\_gforce, 827,592,52,62  
gauge29=jet!temp\_celsius, 494,315,38,26  
gauge30=jet!eicas1, 268,4,170,97  
gauge31=jet!eicas3, 585,5,167,101  
gauge32=jet!jet\_hud\_attitude1, 726,251,141,74  
gauge33=jet!pfd3, 209,540,94,67  
gauge34=jet!jet\_hud\_1, 91,227,273,138

gauge35=jet!jet\_hud\_1, 657,225,278,136  
gauge36=jet!airspeed, 779,458,60,15  
gauge37=jet!ap\_altitude, 907,496,29,13  
gauge38=jet!ap\_heading, 939,507,30,13  
gauge39=jet!ap\_speed, 843,475,28,13  
gauge40=jet!ap\_vertspeed, 873,485,29,13  
gauge41=jet!ap1, 327,393,370,49  
gauge42=jet!auto\_taxi, 723,458,53,16  
gauge43=jet!auto1\_switch, 302,412,22,30  
gauge44=jet!clock\_datum, 494,280,38,28  
gauge45=jet!flaps\_b737, 755,513,52,22  
gauge46=jet!fuel\_fire E1, 477,742,30,20  
gauge47=jet!fuel\_fire E2, 512,742,30,20  
gauge48=jet!fuel2\_tank, 416,673,58,36  
gauge49=KingAir!Landing\_Gear, 941,591,35,62  
gauge50=jet!ice\_deice, 494,362,39,15  
gauge51=jet!ice\_pitot, 494,344,38,15  
gauge52=jet!icon\_atc, 744,427,24,17  
gauge53=jet!fuel1\_tank\_select, 397,673,16,36  
gauge54=jet!icon\_map, 256,425,24,17  
gauge55=jet!jet\_levels, 473,149,80,20  
gauge56=jet!jet\_oil\_press, 264,612,40,40  
gauge57=jet!jet\_oil\_temp, 209,611,40,40  
gauge58=jet!jet2\_egt, 102,611,40,40  
gauge59=jet!jet2\_n1n2, 155,611,40,40  
gauge60=jet!light\_beacon, 714,196,20,10  
gauge61=jet!light\_land, 740,196,20,10  
gauge62=jet!light\_nav, 765,196,20,10  
gauge63=jet!light\_panel, 790,196,20,10  
gauge64=jet!light\_strobe, 815,196,20,10  
gauge65=jet!light\_taxi, 840,196,20,10  
gauge66=jet!nav1-gps switch, 704,397,15,15

gauge67=jet!nav-gps switch, 702,414,20,26  
gauge68=jet!panel1\_fuel, 397,717,15,15  
gauge69=jet!start\_auto\_2e, 730,172,42,13  
gauge70=jet!warning\_fuel, 417,715,56,19  
gauge71=jet!warning\_oil\_eng, 397,740,76,19  
gauge72=jet!warning\_test, 545,742,31,20  
gauge73=jet!wind\_speed, 209,516,93,20  
gauge74=jet!wind indicator 2, 152,441,51,46  
gauge75=jet!throttle\_jet4, 943,530,22,26  
gauge76=MiniPanel!Turn Coordinator, 494,255,38,21  
gauge77=KingAir\_radio!Audio, 433,129,160,17  
gauge78=737-400!Fuel Crossfeed, 750,392,17,16  
gauge79=737-400!Fuel Quantity, 778,420,61,35  
gauge80=737-400!Main Set, 441,4,141,120  
gauge81=737-400!OMI Lights, 213,441,17,45  
gauge82=737-400!ADI, 717,537,108,119  
gauge83=jet!start\_e1, 698,135,40,15  
gauge84=jet!start\_e2, 716,154,40,15  
gauge85=gps\_samtech\_1000!gps\_samtech\_1000, 415,467,293,188  
gauge86=jet!jet\_hud\_attitude1, 157,246,141,74

//-----

[Fixed Window30]  
file=gg777panelv2.bmp  
position=7  
visible=0  
ident=30  
render\_3d\_window=1  
window\_size= 1.000, 1.000  
window\_pos= 0.000, 0.000  
zorder=0

**[Color]**

**Day=128,255,128**

**Night=0,255,0**

**Luminous=0,255,64**

**[Default View]**

**X=0**

**Y=0**

**SIZE\_X=8191**

**SIZE\_Y=5955**