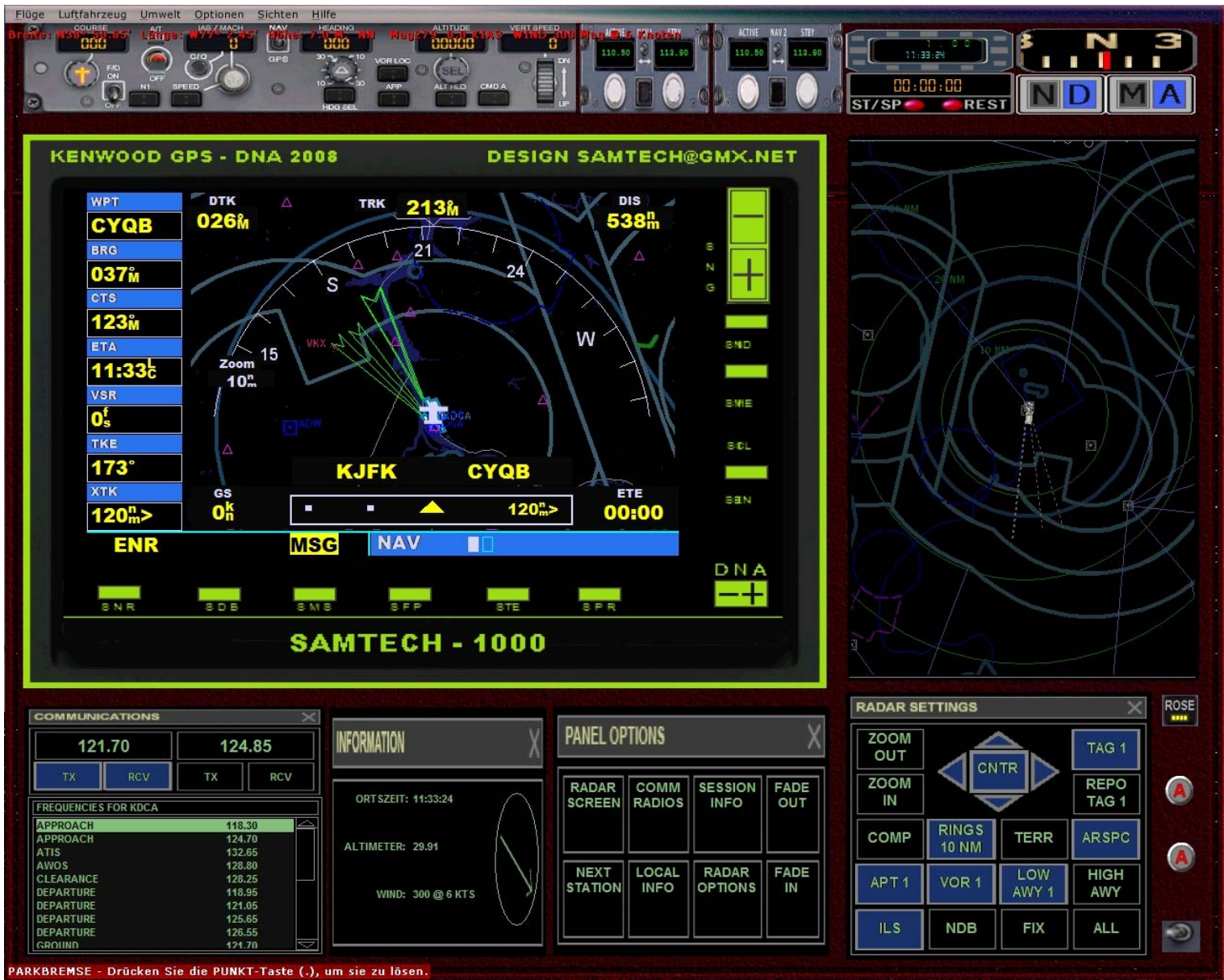


2007 – 2008 Datenverarbeitung und Informationstechnik Boing – Microsoft – Sam Kooperation GPS 2008



PARKBREMSE - Drücken Sie die PUNKT-Taste (.), um sie zu lösen.

**// This Panel.cfg file created by FS Panel Studio panel editor utility - <http://www.fspanelstudio.com>
// Built Tuesday, March 25, 2008 at 08:42 FSPS Build:20211**

[Window Titles]

Window00=Main Panel

Fixed Window30=FORWARD_UP

[VIEWS]

VIEW_FORWARD_WINDOWS=0,RADIO_STACK_PANEL,GPS_PANEL,THROTTLE_PANEL,COMPASS_PANEL,OVERHEAD_PANEL

VIEW_FORWARD_ZOOM=0.500

VIEW_FORWARD_UP_WINDOWS=30

//-----

[Window00]

file=gg777panelv2.bmp

size_mm=1024,768

window_size_ratio=1.000

position=7

visible=1

ident=0

window_size= 1.000, 1.333

window_pos= 0.000, 0.000

gauge00=radar!radar_settings, 316,599,95,56

gauge01=radar!radarscreen, 316,468,95,128

gauge02=G1000!audio_panel, 50,586,36,67

gauge03=Magnetic_Compass!Magnetic-Compass, 494,182,39,37
gauge04=737-400!Throttle Quadrant, 477,664,99,75
gauge05=jet!park_brake, 581,742,43,18
gauge06=jet!autobrakes1, 581,665,45,47
gauge07=jet!brake, 581,715,43,22
gauge08=jet!electric_avionic, 281,134,10,10
gauge09=jet!compass, 494,224,38,28
gauge10=jet!electric_avionic, 308,144,10,10
gauge11=jet!electric_battery, 154,197,20,10
gauge12=jet!electric_battery, 178,197,20,10
gauge13=jet!electric_gen_e1, 207,197,20,10
gauge14=jet!electric_gen_e1, 231, 197 ,20,10
gauge15=jet!electric_gen_e2, 259,197,20,10
gauge16=jet!electric_gen_e2, 284,197,20,10
gauge17=jet!electric1_battery, 322,149,10,10
gauge18=jet!electric1_gen_e1, 294,138,10,10
gauge19=jet!electric1_gen_e1, 273,159,10,10
gauge20=jet!electric1_gen_e2, 300,170,10,10
gauge21=jet!electric1_gen_e1, 286,165,10,10
gauge22=jet!electric1_gen_e2, 314,176,10,10
gauge23=jet!hsi_jet, 102,535,92,71
gauge24=jet!hsi1_rose1_switch, 306,395,15,15
gauge25=jet!jet_airspeed, 883,592,45,62
gauge26=jet!jet_altimeter, 827,537,100,52
gauge27=jet!jet_aoa, 719,499,33,35
gauge28=jet!jet_gforce, 827,592,52,62
gauge29=jet!temp_celsius, 494,315,38,26
gauge30=jet!eicas1, 268,4,170,97
gauge31=jet!eicas3, 585,5,167,101
gauge32=jet!jet_hud_attitude1, 726,251,141,74
gauge33=jet!pfd3, 209,540,94,67
gauge34=jet!jet_hud_1, 91,227,273,138

gauge35=jet!jet_hud_1, 657,225,278,136
gauge36=jet!airspeed, 779,458,60,15
gauge37=jet!ap_altitude, 907,496,29,13
gauge38=jet!ap_heading, 939,507,30,13
gauge39=jet!ap_speed, 843,475,28,13
gauge40=jet!ap_vertspeed, 873,485,29,13
gauge41=jet!ap1, 327,393,370,49
gauge42=jet!auto_taxi, 723,458,53,16
gauge43=jet!auto1_switch, 302,412,22,30
gauge44=jet!clock_datum, 494,280,38,28
gauge45=jet!flaps_b737, 755,513,52,22
gauge46=jet!fuel_fire E1, 477,742,30,20
gauge47=jet!fuel_fire E2, 512,742,30,20
gauge48=jet!fuel2_tank, 416,673,58,36
gauge49=KingAir!Landing_Gear, 941,591,35,62
gauge50=jet!ice_deice, 494,362,39,15
gauge51=jet!ice_pitot, 494,344,38,15
gauge52=jet!icon_atc, 744,427,24,17
gauge53=jet!fuel1_tank_select, 397,673,16,36
gauge54=jet!icon_map, 256,425,24,17
gauge55=jet!jet_levels, 473,149,80,20
gauge56=jet!jet_oil_press, 264,612,40,40
gauge57=jet!jet_oil_temp, 209,611,40,40
gauge58=jet!jet2_egt, 102,611,40,40
gauge59=jet!jet2_n1n2, 155,611,40,40
gauge60=jet!light_beacon, 714,196,20,10
gauge61=jet!light_land, 740,196,20,10
gauge62=jet!light_nav, 765,196,20,10
gauge63=jet!light_panel, 790,196,20,10
gauge64=jet!light_strobe, 815,196,20,10
gauge65=jet!light_taxi, 840,196,20,10
gauge66=jet!nav1-gps switch, 704,397,15,15

gauge67=jet!nav-gps switch, 702,414,20,26
gauge68=jet!panel1_fuel, 397,717,15,15
gauge69=jet!start_auto_2e, 730,172,42,13
gauge70=jet!warning_fuel, 417,715,56,19
gauge71=jet!warning_oil_eng, 397,740,76,19
gauge72=jet!warning_test, 545,742,31,20
gauge73=jet!wind_speed, 209,516,93,20
gauge74=jet!wind indicator 2, 152,441,51,46
gauge75=jet!throttle_jet4, 943,530,22,26
gauge76=MiniPanel!Turn Coordinator, 494,255,38,21
gauge77=KingAir_radio!Audio, 433,129,160,17
gauge78=737-400!Fuel Crossfeed, 750,392,17,16
gauge79=737-400!Fuel Quantity, 778,420,61,35
gauge80=737-400!Main Set, 441,4,141,120
gauge81=737-400!OMI Lights, 213,441,17,45
gauge82=737-400!ADI, 717,537,108,119
gauge83=jet!start_e1, 698,135,40,15
gauge84=jet!start_e2, 716,154,40,15
gauge85=gps_samtech_1000!gps_samtech_1000, 415,467,293,188
gauge86=jet!jet_hud_attitude1, 157,246,141,74

//-----

[Fixed Window30]
file=gg777panelv2.bmp
position=7
visible=0
ident=30
render_3d_window=1
window_size= 1.000, 1.000
window_pos= 0.000, 0.000
zorder=0

[Color]

Day=128,255,128

Night=0,255,0

Luminous=0,255,64

[Default View]

X=0

Y=0

SIZE_X=8191

SIZE_Y=5955

```

<?xml version="1.0" encoding="UTF-8" ?>
<!-- Created from PDF via Acrobat SaveAsXML -->
<!-- Mapping Table version: 28-February-2003 -->
- <TaggedPDF-doc>
  <?xpacket begin=" id="W5M0MpCehiHzreSzNTczkc9d"?>
  <?xpacket begin=" id="W5M0MpCehiHzreSzNTczkc9d"?>
  - <x:xmpmeta xmlns:x="adobe:meta/" x:xmpptk="3.1-701">
  - <rdf:RDF xmlns:rdf="http://www.w3.org/1999/02/22-rdf-syntax-ns#">
    - <rdf:Description rdf:about="" xmlns:pdf="http://ns.adobe.com/pdf/1.3/">
      <pdf:Producer>Acrobat Distiller 7.0 (Windows)</pdf:Producer>
    </rdf:Description>
    - <rdf:Description rdf:about="" xmlns:xap="http://ns.adobe.com/xap/1.0/">
      <xap:CreatorTool>PScript5.dll Version 5.2.2</xap:CreatorTool>
      <xap:ModifyDate>2008-07-16T19:53:30+02:00</xap:ModifyDate>
      <xap:CreateDate>2008-07-16T19:53:30+02:00</xap:CreateDate>
    </rdf:Description>
    - <rdf:Description rdf:about="" xmlns:dc="http://purl.org/dc/elements/1.1/">
      <dc:format>xml</dc:format>
    - <dc:title>
      - <rdf:Alt>
        <rdf:li xml:lang="x-default">Microsoft Word - ARCH.dot</rdf:li>
      </rdf:Alt>
    </dc:title>
    - <dc:creator>
      - <rdf:Seq>
        <rdf:li>scad2</rdf:li>
      </rdf:Seq>
    </dc:creator>
    </rdf:Description>
    - <rdf:Description rdf:about="" xmlns:xapMM="http://ns.adobe.com/xap/1.0/mm/">
      <xapMM:DocumentID>uuid:b5b83a9c-1f89-4be6-be08-9e47907b48b2</xapMM:DocumentID>
      <xapMM:InstanceID>uuid:af7d48b4-790f-421b-beb9-eed79ceef01b</xapMM:InstanceID>
    </rdf:Description>
  </rdf:RDF>
</x:xmpmeta>
<?xpacket end="w"?>
<?xpacket end="r"?>
<P>2007 – 2008 Datenverarbeitung und Informationstechnik Boing – Microsoft – Sam Kooperation GPS 2008</P>
- <Figure>
  <ImageData src="images/gps_img_0.jpg" />
</Figure>
<P>// This Panel.cfg file created by FS Panel Studio panel editor utility - http://www.fspanelstudio.com // Built Tuesday,
  March 25, 2008 at 08:42 FSPS Build:20211</P>
<P>[Window Titles] Window00=Main Panel Fixed Window30=FORWARD_UP</P>
<P>[VIEWS]
  VIEW_FORWARD_WINDOWS=0,RADIO_STACK_PANEL,GPS_PANEL,THROTTLE_PANEL,COMPASS_PANEL,OVERHEAD_PA
  NEL</P>
<P>VIEW_FORWARD_ZOOM=0.500</P>
<P>VIEW_FORWARD_UP_WINDOWS=30</P>
<P>//----- [Window00] file=gg777panelv2.bmp size_mm=1024,768
  window_size_ratio=1.000 position=7 visible=1 ident=0 window_size= 1.000, 1.333 window_pos= 0.000, 0.000</P>
<P>gauge00=radar!radar_settings, 316,599,95,56 gauge01=radar!radarscreen, 316,468,95,128 gauge02=G1000!
  audio_panel, 50,586,36,67 gauge03=Magnetic_Compass!Magnetic-Compass, 494,182,39,37 gauge04=737-400!Throttle
  Quadrant, 477,664,99,75 gauge05=jet!park_brake, 581,742,43,18 gauge06=jet!autobrakes1, 581,665,45,47 gauge07=jet!
  brake, 581,715,43,22 gauge08=jet!electric_avionic, 281,134,10,10 gauge09=jet!compass, 494,224,38,28 gauge10=jet!
  electric_avionic, 308,144,10,10 gauge11=jet!electric_battery, 154,197,20,10 gauge12=jet!electric_battery, 178,197,20,10
  gauge13=jet!electric_gen_e1, 207,197,20,10 gauge14=jet!electric_gen_e1, 231, 197, 20,10 gauge15=jet!electric_gen_e2,
  259,197,20,10 gauge16=jet!electric_gen_e2, 284,197,20,10 gauge17=jet!electric1_battery, 322,149,10,10 gauge18=jet!
  electric1_gen_e1, 294,138,10,10 gauge19=jet!electric1_gen_e1, 273,159,10,10 gauge20=jet!electric1_gen_e2,
  300,170,10,10 gauge21=jet!electric1_gen_e1, 286,165,10,10 gauge22=jet!electric1_gen_e2, 314,176,10,10 gauge23=jet!
  hsi_jet, 102,535,92,71 gauge24=jet!hsi1_rose1_switch, 306,395,15,15 gauge25=jet!jet_airspeed, 883,592,45,62
  gauge26=jet!jet_altimeter, 827,537,100,52 gauge27=jet!jet_aoa, 719,499,33,35 gauge28=jet!jet_gforce, 827,592,52,62
  gauge29=jet!temp_celsius, 494,315,38,26 gauge30=jet!eicas1, 268,4,170,97 gauge31=jet!eicas3, 585,5,167,101
  gauge32=jet!jet_hud_attitude1, 726,251,141,74 gauge33=jet!jpd3, 209,540,94,67 gauge34=jet!jet_hud_1,
  91,227,273,138 gauge35=jet!jet_hud_1, 657,225,278,136 gauge36=jet!airspeed, 779,458,60,15 gauge37=jet!ap_altitude,
  907,496,29,13 gauge38=jet!ap_heading, 939,507,30,13 gauge39=jet!ap_speed, 843,475,28,13 gauge40=jet!
  ap_vertspeed, 873,485,29,13 gauge41=jet!ap1, 327,393,370,49 gauge42=jet!auto_taxi, 723,458,53,16 gauge43=jet!
  auto1_switch, 302,412,22,30 gauge44=jet!clock_datum, 494,280,38,28 gauge45=jet!flaps_b737, 755,513,52,22
  gauge46=jet!fuel_fire E1, 477,742,30,20 gauge47=jet!fuel_fire E2, 512,742,30,20 gauge48=jet!fuel2_tank, 416,673,58,36
  gauge49=KingAir!Landing_Gear, 941,591,35,62 gauge50=jet!ice_deice, 494,362,39,15 gauge51=jet!ice_pitot,
  494,344,38,15 gauge52=jet!icon_atc, 744,427,24,17 gauge53=jet!fuel1_tank_select, 397,673,16,36 gauge54=jet!
  icon_map, 256,425,24,17 gauge55=jet!jet_levels, 473,149,80,20 gauge56=jet!jet_oil_press, 264,612,40,40 gauge57=jet!
  jet_oil_temp, 209,611,40,40 gauge58=jet!jet2_egt, 102,611,40,40 gauge59=jet!jet2_n1n2, 155,611,40,40 gauge60=jet!
  light_beacon, 714,196,20,10 gauge61=jet!light_land, 740,196,20,10 gauge62=jet!light_nav, 765,196,20,10 gauge63=jet!
  light_panel, 790,196,20,10 gauge64=jet!light_strobe, 815,196,20,10 gauge65=jet!light_taxi, 840,196,20,10 gauge66=jet!
  nav1-gps switch, 704,397,15,15 gauge67=jet!nav-gps switch, 702,414,20,26 gauge68=jet!panel1_fuel, 397,717,15,15
  gauge69=jet!start_auto_2e, 730,172,42,13 gauge70=jet!warning_fuel, 417,715,56,19 gauge71=jet!warning_oil_eng,
  397,740,76,19 gauge72=jet!warning_test, 545,742,31,20 gauge73=jet!wind_speed, 209,516,93,20 gauge74=jet!wind
  indicator 2, 152,441,51,46 gauge75=jet!throttle_jet4, 943,530,22,26 gauge76=MiniPanel!Turn Coordinator, 494,255,38,21
  gauge77=KingAir_radio!Audio, 433,129,160,17 gauge78=737-400!Fuel Crossfeed, 750,392,17,16 gauge79=737-400!Fuel
  Quantity, 778,420,61,35 gauge80=737-400!Main Set, 441,4,141,120 gauge81=737-400!OMI Lights, 213,441,17,45
  gauge82=737-400!ADI, 717,537,108,119 gauge83=jet!start_e1, 698,135,40,15 gauge84=jet!start_e2, 716,154,40,15
  gauge85=gps_samtech_1000!gps_samtech_1000, 415,467,293,188 gauge86=jet!jet_hud_attitude1, 157,246,141,74</P>
<P>//----- [Fixed Window30] file=gg777panelv2.bmp position=7 visible=0
  ident=30 render_3d_window=1 window_size= 1.000, 1.000 window_pos= 0.000, 0.000 zorder=0 [Color]
  Day=128,255,128 Night=0,255,0 Luminous=0,255,64</P>
<P>[Default View] X=0 Y=0 SIZE_X=8191 SIZE_Y=5955</P>
</TaggedPDF-doc>

```